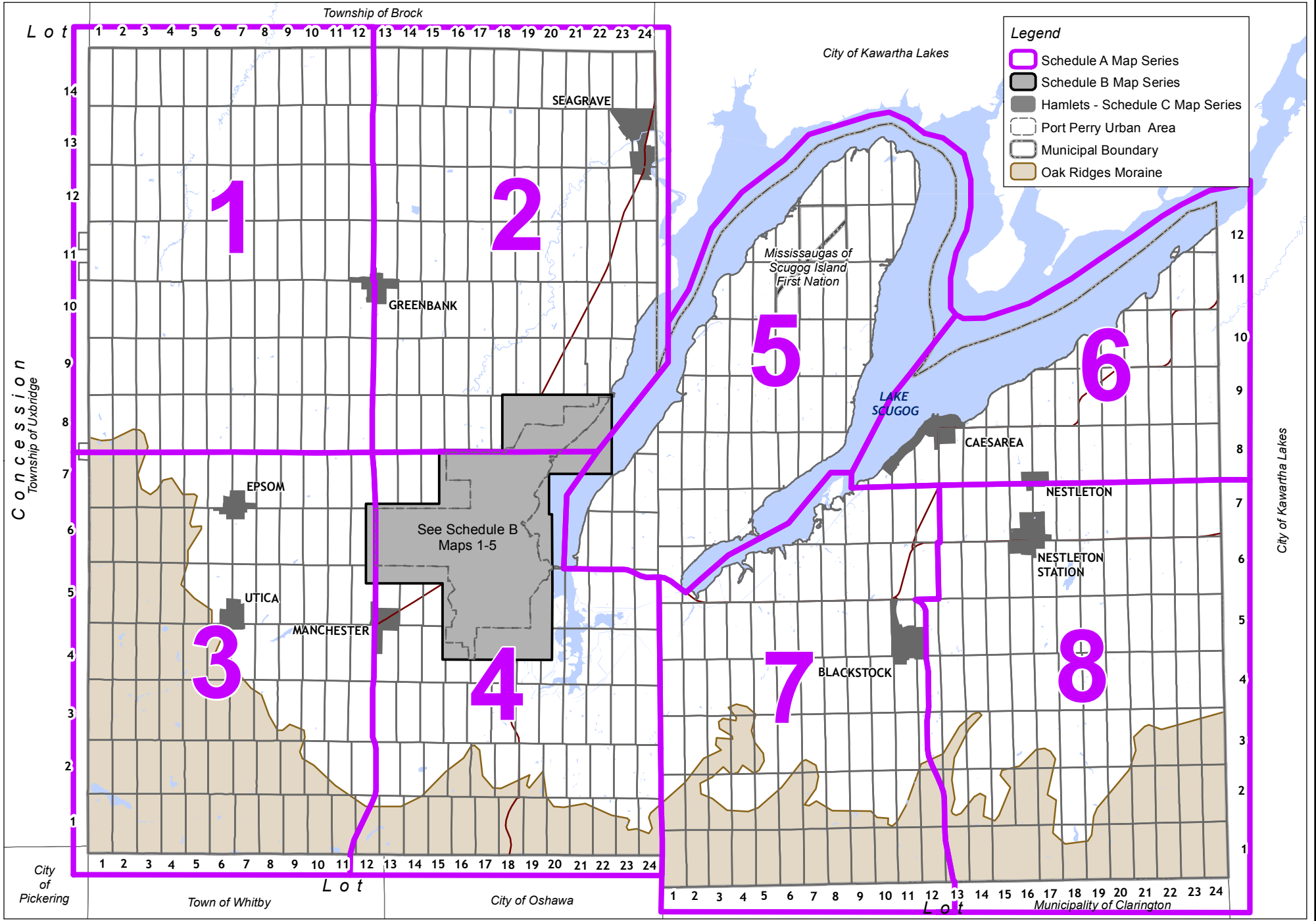


Township of Scugog Zoning By-law 14-14

Key Map Schedule A - Map Series



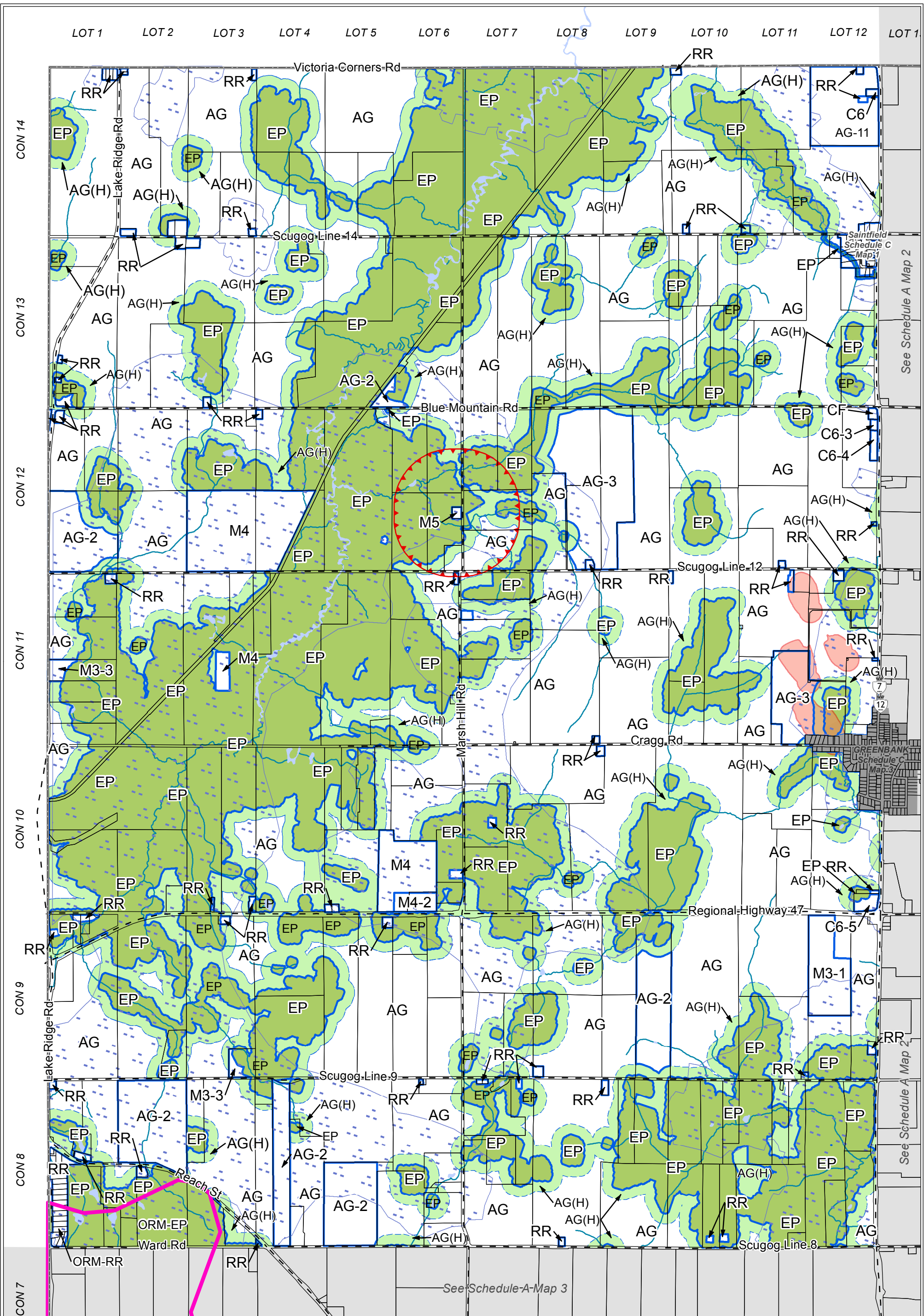
0 0.75 1.5
Kilometres



Legend

- Schedule A Map Series
- Schedule B Map Series
- Hamlets - Schedule C Map Series
- Port Perry Urban Area
- Municipal Boundary
- Oak Ridges Moraine

See Schedule B
Maps 1-5



Township of Scugog
 Zoning By-law 14-14

1:30,000
 @ 11x17

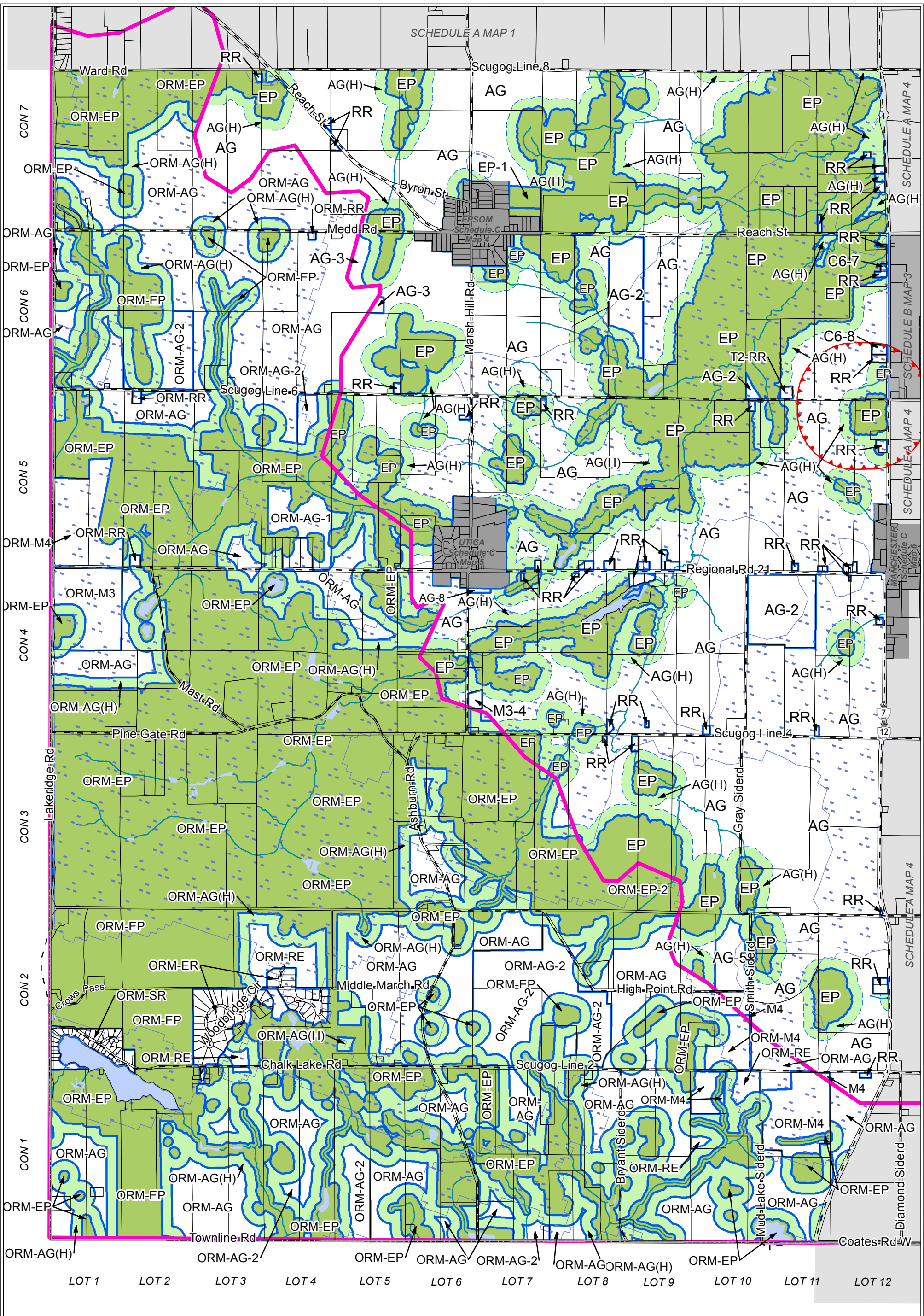
Schedule A Map 1
 Office Consolidation - August 2017

Legend

- Hamlet Boundary
- Oak Ridges Moraine Boundary
- Zone Boundary
- Overlay Areas**
- Waste Disposal Assessment Holding
- Source Water Protection
- High Aquifer Vulnerability

Zones

- AG** Agricultural
- AG(H)** Agricultural Holding
- EP** Environmental Protection
- ORM - EP** Oak Ridges Moraine - Environmental Protection
- RR** Rural Residential
- ORM-RR** Oak Ridges Moraine - Rural Residential
- C6** Rural Commercial
- M3** Rural Industrial
- M4** Extractive Industrial
- M5** Waste Disposal Industrial
- CF** Community Facility
- (H)** Holding
- T** Temporary Use



Township of Scugog
 Zoning By-law 14-14

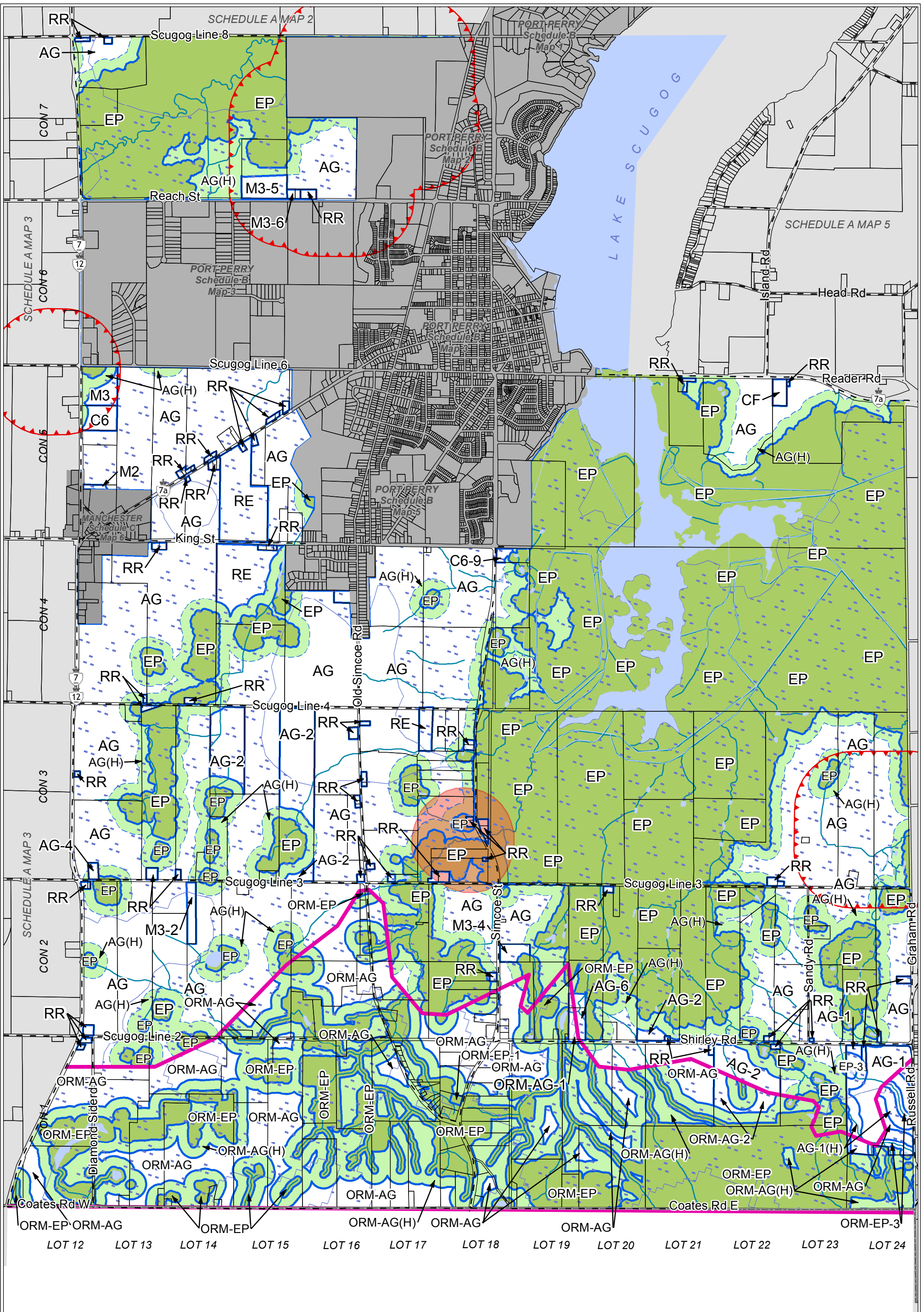
1:30,000
 @ 11x17

Schedule A Map 3
 Office Consolidation - August 2017

- Legend**
- Hamlet Boundary
 - Oak Ridges Moraine Boundary
 - Zone Boundary
- Overlay Areas**
- Waste Disposal Assessment Holding
 - Source Water Protection
 - High Aquifer Vulnerability

- Zones**
- ORM-AG** Oak Ridges Moraine - Agricultural
 - AG** Agricultural
 - ORM-AG(H)** Oak Ridges Moraine - Agricultural Holding
 - AG(H)** Agricultural Holding
 - ORM-EP** Oak Ridges Moraine - Environmental Protection
 - EP** Environmental Protection
 - ORM-RR** Oak Ridges Moraine - Rural Residential
 - RR** Rural Residential
 - ORM-SR** Oak Ridges Moraine - Shoreline Residential

- ORM-ER** Oak Ridges Moraine - Estate Residential
- ORM-RE** Oak Ridges Moraine - Recreational
- C6** Rural Commercial
- ORM-M3** Oak Ridges Moraine - Rural Industrial
- M3** Rural Industrial
- ORM-M4** Oak Ridges Moraine - Extractive Industrial
- M4** Extractive Industrial
- (H)** Holding
- T** Temporary Use



Township of Scugog
Zoning By-law 14-14



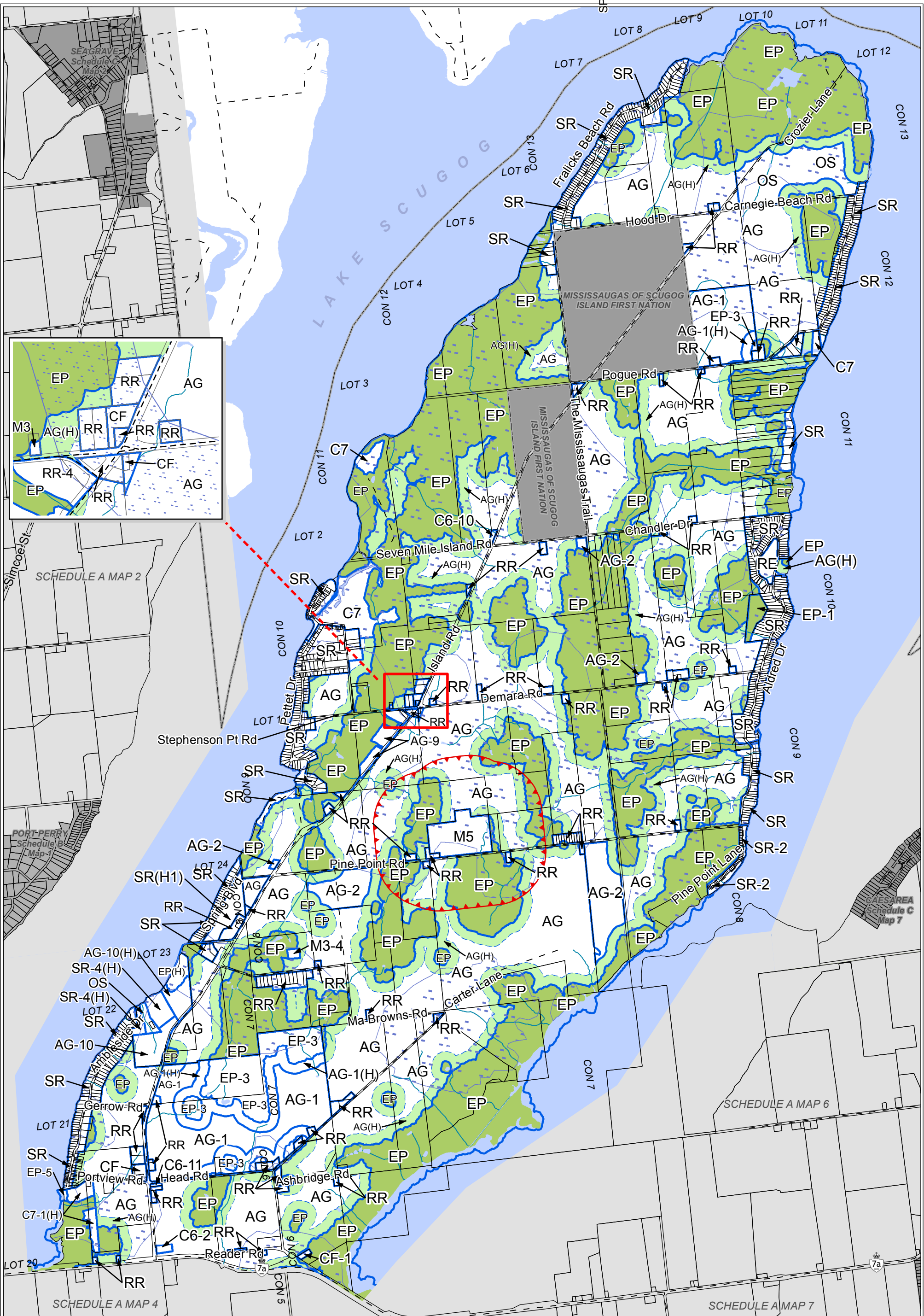
1:30,000
@ 11x17
Schedule A Map 4
Office Consolidation - August 2017

Legend

- Hamlet Boundary
- Oak Ridges Moraine Boundary
- Zone Boundary
- Overlay Areas**
- Waste Disposal Assessment Holding
- Source Water Protection
- High Aquifer Vulnerability

Zones

- ORM-AG** Oak Ridges Moraine - Agricultural
- AG** Agricultural
- ORM-AG(H)** Oak Ridges Moraine - Agricultural Holding
- AG(H)** Agricultural Holding
- ORM-EP** Oak Ridges Moraine - Environmental Protection
- EP** Environmental Protection
- RR** Rural Residential
- RE** Recreational
- C6** Rural Commercial
- M2** General Industrial
- M3** Rural Industrial
- CF** Community Facility
- (H)** Holding



Township of Scugog
 Zoning By-law 14-14

1:32,500
 @ 11x17

Schedule A Map 5
 Office Consolidation - August 2017

Legend

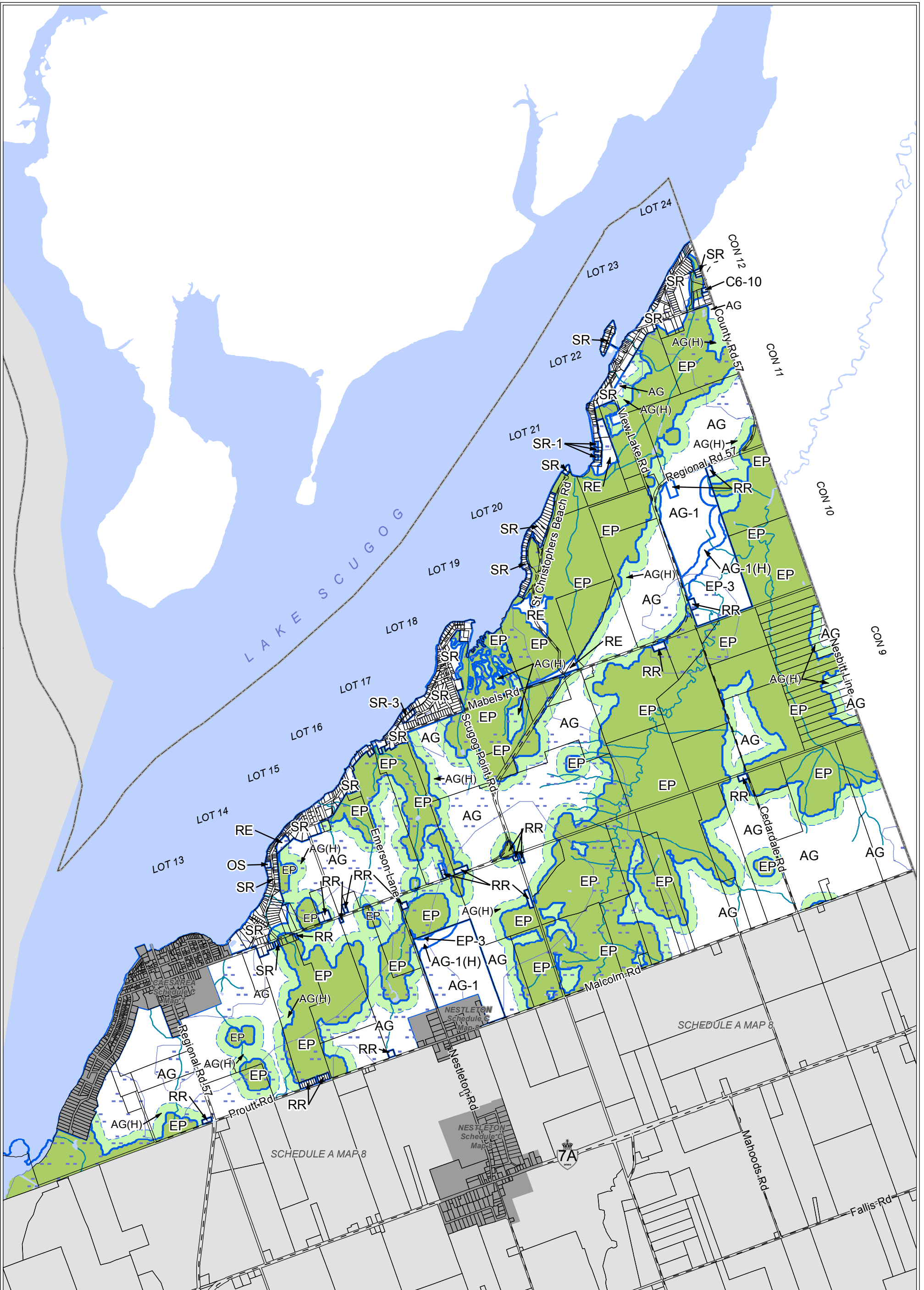
- Hamlet Boundary
- Oak Ridges Moraine Boundary
- Zone Boundary

Overlay Areas

- Waste Disposal Assessment Holding
- Source Water Protection
- High Aquifer Vulnerability

Zones

 AG	Agricultural	C6	Rural Commercial
 AG(H)	Agricultural Holding	M2	General Industrial
 EP	Environmental Protection	M3	Rural Industrial
 RE	Recreational	CF	Community Facility
 RR	Rural Residential	(H)	Holding
 SR	Shoreline Residential		









Township of Scugog
Zoning By-law 14-14










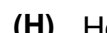

1:33,001
@ 11x17

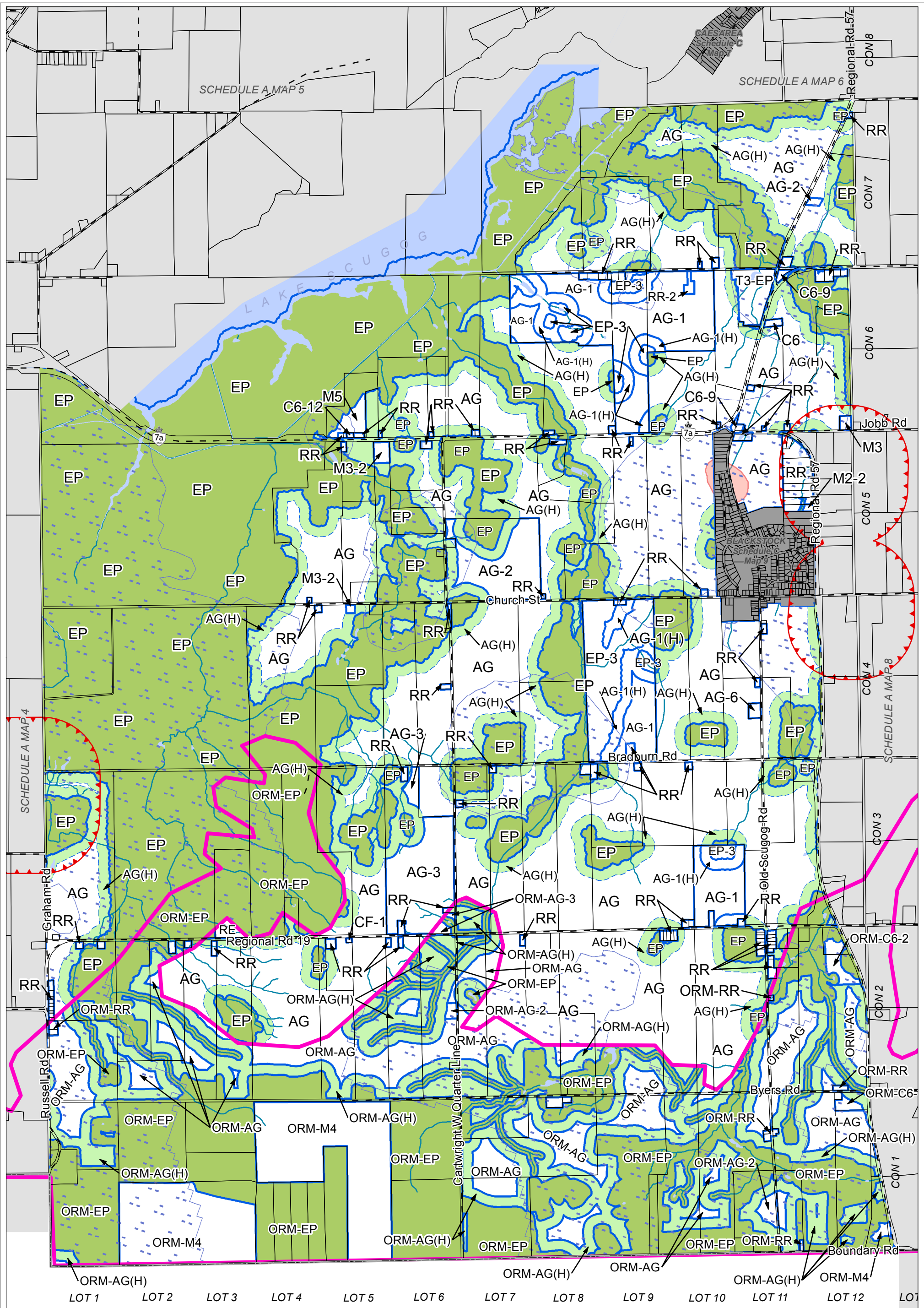
Schedule A Map 6
Office Consolidation - August 2017

Legend

-  Hamlet Boundary
-  Oak Ridges Moraine Boundary
-  Zone Boundary
- Overlay Areas**
-  Waste Disposal Assessment Holding
-  Source Water Protection
-  High Aquifer Vulnerability

Zones

- | | |
|--|---|
|  AG Agricultural |  SR Shoreline Residential |
|  AG(H) Agricultural Holding |  C6 Rural Commercial |
|  EP Environmental Protection |  OS Open Space |
|  RE Recreational |  (H) Holding |
|  RR Rural Residential | |

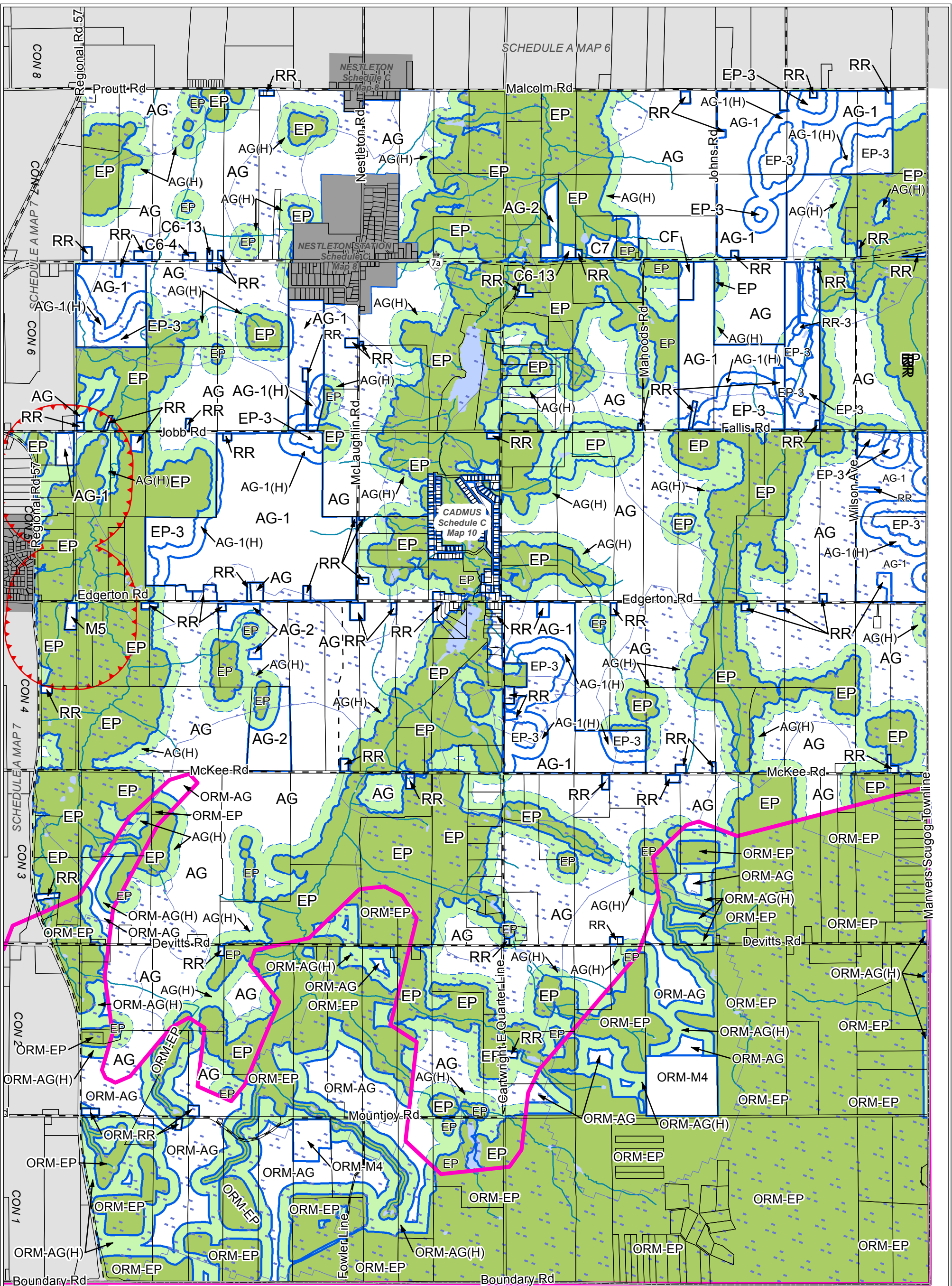


Township of Scugog
 Zoning By-law 14-14

1:30,000
 @ 11x17

Schedule A Map 7
 Office Consolidation - August 2017

Legend		Zones	
	Hamlet Boundary	ORM-AG	Oak Ridges Moraine - Agricultural
	Oak Ridges Moraine Boundary	AG	Agricultural
	Zone Boundary	ORM-AG(H)	Oak Ridges Moraine - Agricultural Holding
	Waste Disposal Assessment Holding	AG(H)	Agricultural Holding
	Source Water Protection	ORM-EP	Oak Ridges Moraine - Environmental Protection
	High Aquifer Vulnerability	EP	Environmental Protection
		RE	Recreational
		ORM-RR	Oak Ridges Moraine - Rural Residential
		RR	Rural Residential
		ORM-C6	Oak Ridges Moraine - Rural Commercial
		C6	Rural Commercial
		M2	General Industrial
		M3	Rural Industrial
		ORM-M4	Oak Ridges Moraine - Extractive Industrial
		M5	Waste Disposal Industrial
		CF	Community Facility
		(H)	Holding



LOT 13 LOT 14 LOT 15 LOT 16 LOT 17 LOT 18 LOT 19 LOT 20 LOT 21 LOT 22 LOT 23 LOT 24

Township of Scugog
 Zoning By-law 14-14

1:30,000
 @ 11x17

Schedule A Map 8
 Office Consolidation - August 2017

Legend

- Hamlet Boundary
- Oak Ridges Moraine Boundary
- Zone Boundary

Overlay Areas

- Waste Disposal Assessment Holding
- Source Water Protection
- High Aquifer Vulnerability

Zones

- ORM-AG** Oak Ridges Moraine - Agricultural
- AG** Agricultural
- ORM-AG(H)** Oak Ridges Moraine - Agricultural Holding
- AG(H)** Agricultural Holding
- ORM-EP** Oak Ridges Moraine - Environmental Protection
- EP** Environmental Protection
- ORM-RR** Oak Ridges Moraine - Rural Residential
- RR** Rural Residential

- C6** Rural Commercial
- C7** Tourist Commercial
- ORM-M4** Oak Ridges Moraine - Extractive Industrial
- M5** Waste Disposal Industrial
- CF** Community Facility
- (H)** Holding